

WROCLAW UNIVERSITY OF SCIENCE AND TECHNOLOGY

Address: Wybrzeże Wyspiańskiego 27,
50-370 Wrocław, Poland

Admissions Center

FOREIGN STUDENT ADMISSIONS OFFICE

Wybrzeże Wyspiańskiego 23/25 (build. C-13, room 1.14)

www.pwr.edu.pl

www.admission.pwr.edu.pl

e-mail: admission@pwr.edu.pl

tel.: +48 71 320 37 11

+48 71 320 31 70

+48 71 320 44 39

+48 71 320 38 96

Last updated May 2026



You can find us at:



Wrocław is the 3rd largest city in Poland in terms of population with over 675 000 inhabitants

Wrocław the meeting place



Wrocław a great place to be

Wrocław is the best choice if you are looking for a place to study. A great atmosphere, a large job market, academic staff, rich cultural and entertainment offer of the city that meets students' needs – all this contributes to the strength of Wrocław.

Wrocław is a city with beautiful architecture and plentiful green areas situated on the Odra river on 12 islands connected by over 100 bridges. Wrocław, today the administrative, educational, business and cultural capital of the Lower Silesia region, is a city with a rich history. The city is situated close to the borders with Germany and the Czech Republic.

visitwroclaw.eu



Wrocław Tech

pwr.edu.pl



Wrocław University of Science and Technology

Wrocław University of Science and Technology (Wrocław Tech) is one of Poland's leading centres of science and education, with a steadily growing international reputation among technical universities worldwide. Established in 1945, the university builds on over 160 years of academic tradition, drawing on the intellectual legacy of Lviv University of Technology and the technological heritage of Technische Hochschule Breslau.

Today, Wrocław Tech is home to around 21,000 students and more than 2,200 academic staff. Our vibrant international community includes students from over 60 countries, supported by partnerships with more than 120 universities worldwide. Through the Erasmus+ Programme and cooperation with over 400 partner institutions, students benefit from extensive exchange opportunities.

The university offers excellent facilities, including 8 certified laboratories, over 540 lecture halls and classrooms, and more than 1,000 teaching and research laboratories. Students can actively engage in numerous organisations and associations, developing both their academic interests and creative passions.

By joining Wrocław Tech, you become part of a prestigious European academic network. As a member of Unite! (University Network for Innovation, Technology and Engineering), the university provides access to borderless education in collaboration with nine leading technical universities across Europe.

Discover more: www.unite-university.eu

Wrocław itself is often considered the capital of Polish computer science—thanks in large part to the university's high teaching standards, advanced research, and strong links with industry. Our world-class laboratories and innovative research projects foster collaboration with leading companies in Poland and abroad.

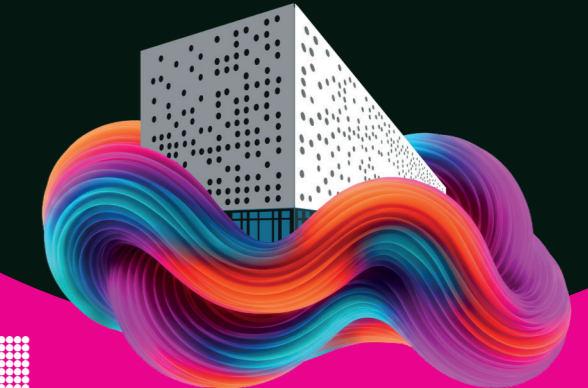
Studying at Wrocław Tech gives you a degree recognised across the European Union, the flexibility to shape your academic path, and the opportunity to specialise in cutting-edge fields such as nanotechnology, biotechnology, telecommunications, and information systems. You will gain valuable practical experience and a strong technical foundation for your future career.

With Wrocław Tech – the possibilities are endless.



Wrocław University
of Science and Technology

ADMISSION GUIDE



IS ALSO STUDYING WITH US

WROCLAWTECH

2026/2027

ADMISSION.PWR.EDU.PL



PROGRAMMES IN ENGLISH

BACHELOR'S DEGREE:

Faculty of Information and Communication Technology
▶ **APPLIED COMPUTER SCIENCE**

Faculty of Management
▶ **MANAGEMENT**, specialisation: Organizational Management

Faculty of Mechanical Engineering
▶ **MECHANICAL ENGINEERING**, specialisation: Mechanical Engineering Design

Faculty of Fundamental Problems of Technology
▶ **MEDICAL INFORMATICS**

Faculty of Electronics, Photonics and Microsystems
▶ **ELECTRONIC AND COMPUTER ENGINEERING**

MASTER'S DEGREE:

Faculty of Architecture
▶ **ARCHITECTURE**, specialisation: Architecture and Urban Planning

Faculty of Civil Engineering
▶ **CIVIL ENGINEERING**

Faculty of Chemistry
▶ **ADVANCED NANO AND BIOMATERIALS MONABIPHOT**
▶ **BIOSCIENCES**, specialisation: Bioinformatics
▶ **BIOSCIENCES**, specialisation: Medicinal Chemistry
▶ **CHEMICAL ENGINEERING AND TECHNOLOGY**, specialisation: Advanced Chemical Technology

Every faculty offers Bachelor and Master degree programmes in Polish.

▶ **CHEMICAL ENGINEERING AND TECHNOLOGY**, specialisation: Advanced Chemical Engineering

Faculty of Information and Communication Technology
▶ **APPLIED COMPUTER SCIENCE**, specialisation: Computer Engineering

▶ **COMPUTER ENGINEERING**, specialisation: Advanced Computer Science
▶ **COMPUTER ENGINEERING**, specialisation: Internet Engineering

Faculty of Electrical Engineering
▶ **ELECTRICAL ENGINEERING**, specialisation: Control in Electrical Power Engineering

▶ **ELECTRICAL ENGINEERING**, specialisation: Renewable Energy Systems

Faculty of Geoengineering, Mining and Geology
▶ **MINING AND GEOLOGY**, specialisation: Mineral Resources Exploration

▶ **MINING AND GEOLOGY**, specialisation: Entrepreneurship, Innovation and Technology Integration in Mining (MEITIM)

▶ **MINING AND GEOLOGY**, specialisation: Geomatics for Mineral Resource Management

▶ **MINING AND GEOLOGY**, specialisation: Geotechnical and Environmental Engineering

▶ **MINING AND GEOLOGY**, specialisation: Mining Engineering

▶ **GEODESY AND CARTOGRAPHY**, specialisation: Geodata Engineering

Faculty of Environmental Engineering
▶ **ENVIRONMENTAL QUALITY MANAGEMENT**

Faculty of Management
▶ **BUSINESS ENGINEERING**, specialisation: Business Intelligence

▶ **MANAGEMENT**, specialisation: Human Resource Management

Faculty of Mechanical and Power Engineering
▶ **POWER ENGINEERING**, specialisation: Renewable Sources Of Energy

▶ **POWER ENGINEERING**, specialisation: Refrigeration and Cryogenics

▶ **POWER ENGINEERING**, specialisation: Computer Aided Mechanical and Power Engineering

Faculty of Mechanical Engineering
▶ **MECHANICAL ENGINEERING AND MACHINE BUILDING**, specialisation: Automotive Engineering

▶ **MANAGEMENT AND MANUFACTURING ENGINEERING**, specialisation: Production Management

Faculty of Electronics, Photonics and Microsystems
▶ **ELECTRONIC**, specialisation: Advanced Applied Electronics

▶ **CONTROL ENGINEERING AND ROBOTICS**, specialisation: Embedded Robotics

Faculty of Pure and Applied Mathematics

▶ **APPLIED MATHEMATICS**

1. **GET STARTED**
Check out the Wrocław Tech study offer, required documents and deadlines at admission.pwr.edu.pl
2. **ONLINE REGISTRATION IN THE SYSTEM**
▶ Create an account, fill in all the required data, including personal data according to your passport, and upload a formal photo
▶ Attach documents required for qualification (educational documents and language confirmation)
▶ Sign up for your chosen study program, you can choose up to 6 programs, but remember to set your priorities
▶ Pay the application fee to the account provided in the System
3. **MANDATORY ENTRANCE EXAM**
Take the online mandatory entrance exam in Mathematics with elements of logic. Participation in the exam is a mandatory condition for the further processing of the application.
4. **APPLICATION ASSESSMENT**
Wait for your application to be reviewed and for information on whether you meet the admission requirements.
5. **TUITION FEE PAYMENT**
Pay the tuition fee (if applicable) to the personal bank account provided in the System.
6. **VISA PROCEDURE AND ARRIVAL**
Check the list of necessary documents for a student visa on the Polish Embassy or Consulate website, and schedule an appointment.
7. **SUBMISSION OF DOCUMENTS**
Finalizing the admission process, submit hard copies and Xerox copies of all required documents in person within deadlines.

STUDY OPTIONS
Bachelor programmes
duration: 3 – 3,5 years

Master programmes
duration: 1,5 – 2 years

Doctoral programmes are free of charge and offered at the Doctoral School: <https://szd.pwr.edu.pl/en/>

REQUIRED DOCUMENTS

- ▶ secondary education certificate or higher educational diploma with transcripts entitling to apply for admission to bachelor's or master's studies in Poland
- ▶ Apostille or legalization of original educational documents issued outside Poland
- ▶ sworn translation into Polish or English
- ▶ document confirming proficiency in Polish or English at a minimum B2 level in accordance with the Regulation of the Minister of Science and Higher Education
- ▶ NAWA's Director individual recognition statement – does not apply to educational documents issued in the EU/OECD/EFTA members, IB or EB diplomas, or those recognised under international agreements (e.g., Ukraine)
- ▶ medical certificate – only for the Faculty of Chemistry and Faculty of Geoengineering, Mining and Geology
- ▶ application form
- ▶ passport/ID - only for inspection

APPLICATION FEE IS 100 PLN

TUITION FEES:
Check out our website:



Intensive preparatory courses offered to international students who wish to improve their language skills and then to study in Polish or English:

- ▶ **English language course** (level: B1-B2) 1 year (600 hours)/1 semester (300 hours)
- ▶ **Polish language course** (level: A1-B2) 1 year (600 hours)

For tuition and application fees please visit the website



SCHOLARSHIPS

- ▶ Study in Wrocław study-in-wroclaw.pl
- ▶ NAWA Scholarship Programmes nawa.gov.pl
- ▶ Solaris at Wrocław Tech rekrutacja.pwr.edu.pl/solaris

TUITION-FREE STUDIES

Full-time studies in Polish are free of charge for foreigners who hold:

- ▶ EU / EFTA citizenship or are family members of such citizens and reside in Poland
- ▶ permanent residence permit or long-term EU resident status
- ▶ temporary residence permit, including for the purpose of: employment requiring high qualifications, mobility under the EU Blue Card, family reunification, conducting scientific research or development work
- ▶ refugee status, or benefit from temporary or subsidiary protection
- ▶ State Certificate of Proficiency in Polish Language at C1 level, more at: certyfikatpolski.pl
- ▶ Polish Card or decision confirming Polish origin.
- ▶ English-taught programmes at Wrocław Tech are tuition-free for citizens of EU Member States, the Swiss Confederation, the United Kingdom, and EFTA/EEA countries, as well as their family members residing in Poland.

ACCOMMODATION

Wrocław Tech offers accommodation in double or triple rooms of varying standards, with access to a shared kitchen, bathroom, lecture hall, and laundry. Rooms are fully furnished (bed, table, chairs, bookshelves, wardrobe). Bedding, towels, cleaning supplies, and kitchenware are not provided. Prices range from approximately 180 to 200 EUR. Accommodation confirmation depends on availability and must be approved by the university after notifying us of your arrival.

More information:



More information:



OPPORTUNITIES AND POTENTIAL

Wrocław has created a favorable ground for diversified business. It is the largest R&D centre in Poland for global companies, such as: **LG, Philips, Volvo, Bosch, Hewlett-Packard, Nokia Solutions and Networks, Wabco, KGHM, Ryanair, Credit Suisse, BNY Mellon, Google, IBM.**

Wrocław Tech's **Career Office** prepare students and graduates to enter the labour market. It provides students with job or internship offers, consults CV, supports interesting projects, organizes meetings with employers, advises in trainings and workshops. Moreover, Wrocław Tech has contacts with many educational and research institutions which facilitates pursuing part of your studies outside Poland. Wrocław Tech is involved, among others, in the following projects: **Erasmus +, Student Exchange Programmes, the Double Degree Master Programme T.I.M.E, the Polish and American Fulbright Commission, DAAD, Vulcanus in Japan, CEEPUS.** Wrocław University of Science and Technology is in cooperation with about 200 partners from about 50 countries. All of this can enhance your future career for sure. Obviously you don't have to limit yourself to Wrocław only, our graduates can be found all over the world, working for renowned companies or having set up their own businesses.



The academic life of Wrocław Tech is concentrated around its main campus on both sides of the Odra River. It is one of the fastest-developing technical universities in Poland, with key investments such as Bibliotech, Geocentrum, and Technopolis—modern centres for education, research, and innovation. The Student Cultural Zone offers facilities tailored to student

needs, including parking, dining, and conference spaces. A unique feature is the "Polinka" cable car, connecting the main campus with Geocentrum across the river. The university campus has been ranked among the 15 most beautiful in the world, admired for its modernist architecture along the Odra River.

We invite you to take a virtual walk on the campus in Google to see everything yourself

