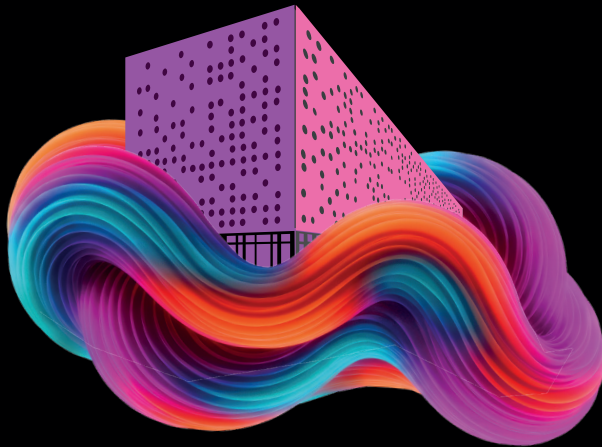


IS ALSO STUDYING WITH US



Wrocław University
of Science and Technology

ADMISSION.PWR.EDU.PL

2025/2026

WROCLAWTECH



PROGRAMMES IN ENGLISH

BACHELOR DEGREE:

FACULTY OF MANAGEMENT:

- ▶ Organizational Management

FACULTY OF MECHANICAL ENGINEERING:

- ▶ Mechanical Engineering

FACULTY OF ELECTRONICS, PHOTONICS AND MICROSYSTEMS:

- ▶ Electronic and Computer Engineering

FACULTY OF INFORMATION AND COMMUNICATION TECHNOLOGY:

- ▶ Applied Computer Science

FACULTY OF FUNDAMENTAL PROBLEMS OF TECHNOLOGY:

- ▶ Medical Informatics

MASTER'S DEGREE

FACULTY OF ARCHITECTURE:

- ▶ Architecture

FACULTY OF CIVIL ENGINEERING:

- ▶ Civil Engineering

FACULTY OF CHEMISTRY:

- ▶ Advanced Nano-and Bio-Materials Monobiphot

- ▶ Biosciences: Specialisation: Bioinformatics

- ▶ Biosciences: Specialisation: Medicinal Chemistry

- ▶ Chemical Engineering and Technology: Specialisation: Advanced Chemical Engineering

- ▶ Chemical Engineering and Technology: Specialisation: Advanced Chemical Technology

FACULTY OF INFORMATION AND COMMUNICATION TECHNOLOGY:

- ▶ Computer Engineering
- ▶ Advanced Computer Science
- ▶ Internet Engineering

FACULTY OF ELECTRICAL ENGINEERING:

- ▶ Control In Electrical Power Engineering
- ▶ Renewable Energy Systems

FACULTY OF GEOENGINEERING, MINING AND GEOLOGY:

- ▶ Mining Engineering
- ▶ Geotechnical and Environmental Engineering

- ▶ Geomatics For Mineral Resource Management
- ▶ Geomatics

FACULTY OF ENVIRONMENTAL ENGINEERING:

- ▶ Environmental Quality Management

FACULTY OF MANAGEMENT:

- ▶ Business Intelligence
- ▶ Human Resource Management

FACULTY OF MECHANICAL AND POWER ENGINEERING:

- ▶ Renewable Sources of Energy
- ▶ Refrigeration and Cryogenics
- ▶ Computer Aided Mechanical and Power Engineering

FACULTY OF MECHANICAL ENGINEERING:

- ▶ Automotive Engineering
- ▶ Production Management

FACULTY OF ELECTRONICS, PHOTONICS AND MICROSYSTEMS:

- ▶ Advanced Applied Electronics
- ▶ Embedded Robotics

FACULTY OF PURE AND APPLIED MATHEMATICS:

- ▶ Applied Mathematics

STEP BY STEP HOW TO APPLY

1.

GET STARTED

Check out the study offer, required documents and deadlines at www.admission.pwr.edu.pl

2.

ONLINE REGISTRATION IN THE SYSTEM

- ▶ Create an account, fill in all the required data, including personal data according to your passport, and upload a formal photo
- ▶ Attach documents required for qualification (educational documents and language confirmation)
- ▶ Sign up for the chosen field of study
- ▶ Pay the application fee to the account provided in the System

3.

APPLICATION ASSESSMENT

Wait for the application assessment and check for the results.

4.

TUITION FEE PAYMENT

Pay the tuition fee (if applicable) to the personal bank account provided in the System.

5.

CONDITIONAL ACCEPTANCE

Once the tuition fee payment is received (if applicable), the Student Status Certificate and Decision of Conditional Acceptance will be issued.

6.

VISA PROCEDURE

Check the list of necessary documents for a student visa on the Polish Embassy or Consulate website, and schedule an appointment.

7.

ARRIVAL and SUBMISSION OF DOCUMENTS

Finalizing the admission process, submit hard copies and Xerox copies of all required documents in person within deadlines.

STUDY OPTIONS

Bachelor programmes

duration: 3 – 3,5 years

Master programmes

duration: 1,5 – 2 years

Doctoral programmes are free of charge and offered at the Doctoral School: <https://szd.pwr.edu.pl/en/>

TUITION FEES

Check out
our website:



REQUIRED DOCUMENTS

- ▶ **formal photo** (only digital format 300*375 px)
- ▶ **passport / ID** (only for inspection)
- ▶ **secondary and higher secondary school certificate / degree certificate with mark-sheets / transcript of records legalized by the proper embassy or with Apostille**
- ▶ **sworn translation into Polish or English language** of documents issued in any language apart from mentioned above (including the legalized certificate/mark-sheets/other document)
- ▶ **document confirming the required knowledge of Polish or English** for study purposes - medium of instruction letter / language certificate (at least B2 level IELTS, TOEFL, etc.) / Skype interview
- ▶ **medical certificate** (only for candidates applying for the Faculty of Chemistry and Faculty of Geoenvironment, Mining and Geology)
- ▶ **declaration of not holding Polish citizenship**
- ▶ **application form**

LANGUAGE COURSES

Intensive preparatory courses offered to international students who wish to improve their language skills and then to study in Polish or English:

- ▶ **English language course** (level: B1-B2) 1 year (600 hours)/1 semester (300 hours)
- ▶ **Summer Polish online course** (level: B1-B2) 4 weeks (80 hours)
- ▶ **Polish language course** (level: A1-B2) 1 year (600 hours)

For tuition and application fees please visit the website



SCHOLARSHIPS

- ▶ Study in Wroclaw www.study-in-wroclaw.pl
- ▶ NAWA Scholarship Programmes www.nawa.gov.pl
- ▶ Visegrad Scholarship www.visegradfund.org/scholarships

TUITION-FREE STUDIES

Wroclaw Tech does not charge the tuition fees for education at full-time studies from foreigners being citizens of EU / EFTA countries or having a Polish spouse, as well as from holders of one of following documents:

- ▶ Pole's Card
- ▶ Permanent residence or long-term EU-residence card
- ▶ Polish Language certificate C1 level www.certyfikatpolski.pl
- ▶ Refugee status or temporary protection

More information:



ACCOMMODATION

Wroclaw Tech offers accommodation in double or triple rooms of varying standards, with access to a shared kitchen, bathroom, lecture hall, and laundry. Rooms are fully furnished (bed, table, chairs, bookshelves, wardrobe). Bedding, towels, cleaning supplies, and kitchenware are not provided. Prices range from approximately 130 to 150 EUR. To apply, submit your details in the IRC system. Accommodation confirmation depends on availability and must be approved by the university after notifying us of your arrival.

More information:



OPPORTUNITIES AND POTENTIAL

Wroclaw has created a favorable ground for diversified business. It is the largest R&D centre in Poland for global companies, such as: **LG, Philips, Volvo, Bosch, Hewlett-Packard, Nokia Solutions and Networks, Wabco, KGHM, Ryanair, Credit Suisse, BNY Mellon, Google, IBM.**

Wroclaw Tech's **Career Office** prepare students and graduates to enter the labour market. It provides students with job or internship offers, consults CV, supports interesting projects, organizes meetings with employers, advises in trainings and workshops. Moreover, Wroclaw Tech has contacts with many educational and research institutions which facilitates pursuing part of your studies outside Poland. Wroclaw Tech is involved, among others, in the following projects: **Erasmus +, Student Exchange Programmes, the Double Degree Master Programme T.I.M.E, the Polish and American Fulbright Commission, DAAD, Vulcanus in Japan, CEEPUS.** Wroclaw University of Science and Technology is in cooperation with about 200 partners from about 50 countries. All of this can enhance your future career for sure. Obviously you don't have to limit yourself to Wroclaw only, our graduates can be found all over the world, working for renowned companies or having set up their own businesses.

CAMPUS



The academic life of Wrocław Tech focuses in a close area, in the vicinity of the main building, on both sides of the Odra river. Wrocław Tech is one of the most dynamically developing technical universities in the country. The most important recent investments of Wrocław Tech include: **Bibliotech** – a building that operates on the basis of modern IT infrastructure and is the seat of the Centre of Knowledge and Science and Technology Information as well as the location of super powerful computer „BEM”; **Geocentrum** – an educational and research complex; **Technopolis** – two modern buildings of the Center of IT and Communication Technologies and the Centre of Education and Technology that act as educational, scientific and laboratory centres.

The Student Cultural Zone, in which, among others, a multi-storey car park, cafeteria and conference rooms are located, was founded as an answer to student needs. **The cable car across the Odra River**, named „**Polinka**”, is a unique communication solution in Poland. This cable car connects the main campus of Wrocław University of Science and Technology with the Geocentrum campus, which is located on the opposite side of the Odra River. The campus of the university was placed among the **15 most beautiful in the world** according to a statement published by the prestigious online journal „The Huffington Post” and the American record company Disney (Pixar). Numerous buildings in the modernist style, located mainly by Odra River bank, were especially admired.

We invite you to take a virtual walk on the campus in Google to see everything yourself





Wrocław Tech

pwr.edu.pl

Wrocław University of Science and Technology

Wrocław Tech is one of the leading scientific and educational centres in Poland. Its position among technical universities in the world strengthens every year. Wrocław Tech was founded in 1945 but it has over 160 years of intellectual heritage from Lviv University of Technology and technological heritage from Technische Hochschule Breslau.

About 21 000 students study at Wrocław Tech and the number of academic staff is over 2200. There are students from over 60 countries and cooperation agreements signed with more than 120 tertiary institutions from nearly 40 countries. The university is proud to have a lot of students and staff exchanges under Erasmus+ Programme, 400 partner universities, 8 certified laboratories, 540 teaching rooms and lecture halls, over 1000 didactic and research laboratories.

At the university, there are numerous student organisations

and associations. Students have an opportunity to develop their scientific and creative passions.

Thanks to Wrocław Tech the city appears to be the capital of Polish computer science. This is partly a result of the European standards of teaching and research conducted by the university employees. The world level of scientific research and excellent equipment in laboratories lead to cooperation with many Polish and foreign companies.

All of this allows you to get a degree recognized across European Union, design your study path and choose speciality, do stimulating and rewarding research on new technologies such as: nanotechnology, biotechnology, telecommunications, teleinformatics and information systems, as well as gain valuable experience and technical background.

With Wrocław Tech - nothing is impossible!

Wrocław is the 3rd largest city in Poland in terms of population with over 675 000 inhabitants

Wrocław *the meeting place*



Wrocław a great place to be

Wrocław is the best choice if you are looking for a place to study. A great atmosphere, a large job market, academic staff, rich cultural and entertainment offer of the city that meets students' needs – all this contributes to the strength of Wrocław.

Wrocław is a city with beautiful architecture and plentiful green areas situated on the Odra river on 12 islands connected by over 100 bridges. Wrocław, today the administrative, educational, business and cultural capital of the Lower Silesia region, is a city with a rich history. The city is situated close to the borders with Germany and the Czech Republic.





WROCŁAW UNIVERSITY OF SCIENCE AND TECHNOLOGY

Address: Wybrzeże Wyspiańskiego 27,
50-370 Wrocław, Poland

Admissions Center

Foreign Student Admissions Office

Wybrzeże Wyspiańskiego 23/25 (build. C-13, room 1.14)

www.pwr.edu.pl

www.admission.pwr.edu.pl

e-mail: admission@pwr.edu.pl

telephone: +48 71 320 37 11

+48 71 320 31 70

+48 71 320 44 39



You can find us at:



Last updated February 2025